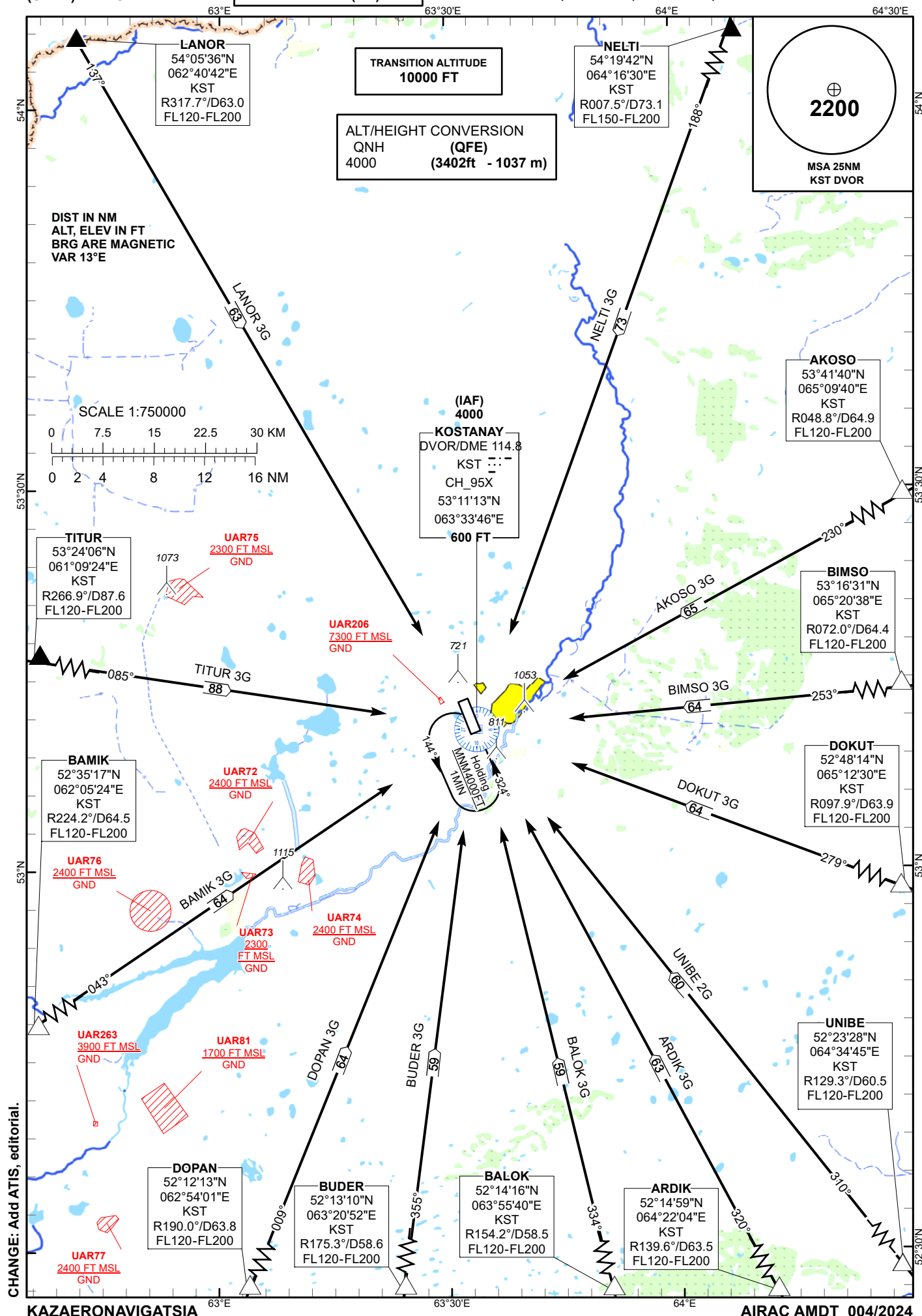


STANDARD ARRIVAL  
CHART - INSTRUMENT  
(STAR) - ICAO

KOSTANAY TOWER 129.30  
KOSTANAY ATIS (EN) 118.5  
KOSTANAY ATIS (RU) 126.8

NELTI 3G, AKOSO 3G, BIMSO 3G, DOKUT 3G,  
ARDIK 3G, BALOK 3G, BUDER 3G, DOPAN 3G,  
BAMIK 3G, TITUR 3G, LANOR 3G, UNIBE 2G.

KOSTANAY  
RWY 14



<b>Standard Arrival Routes Instrument (STAR) KOSTANAY RWY 14</b>
<b>NELTI 3G</b> After crossing NELTI (R007.5° D73.1NM KST), proceed on track 188° to DVOR/DME KST. Cross NELTI at FL150 – FL200. Cross DVOR/DME KST at 4000FT.
<b>AKOSO 3G</b> After crossing AKOSO (R048.8° D64.9NM KST), proceed on track 230° to DVOR/DME KST. Cross AKOSO at FL120 – FL200. Cross DVOR/DME KST at 4000FT.
<b>BIMSO 3G</b> After crossing BIMSO (R072.0° D64.4NM KST), proceed on track 253° to DVOR/DME KST. Cross BIMSO at FL120 – FL200. Cross DVOR/DME KST at 4000FT.
<b>DOKUT 3G</b> After crossing DOKUT (R097.9° D63.9NM KST), proceed on track 279° to DVOR/DME KST. Cross DOKUT at FL120 – FL200. Cross DVOR/DME KST at 4000FT.
<b>ARDIK 3G</b> After crossing ARDIK (R139.6° D63.5NM KST), proceed on track 320° to DVOR/DME KST. Cross ARDIK at FL120 – FL200. Cross DVOR/DME KST at 4000FT.
<b>BALOK 3G</b> After crossing BALOK (R154.2° D58.5NM KST), proceed on track 334° to DVOR/DME KST. Cross BALOK at FL120 – FL200. Cross DVOR/DME KST at 4000FT.
<b>BUDER 3G</b> After crossing BUDER (R175.3° D58.6NM KST), proceed on track 355° to DVOR/DME KST. Cross BUDER at FL120 – FL200. Cross DVOR/DME KST at 4000FT.
<b>DOPAN 3G</b> After crossing DOPAN (R190.0° D63.8NM KST), proceed on track 009° to DVOR/DME KST. Cross DOPAN at FL120 – FL200. Cross DVOR/DME KST at 4000FT.
<b>BAMIK 3G</b> After crossing BAMIK (R224.2° D64.5NM KST), proceed on track 043° to DVOR/DME KST. Cross BAMIK at FL120 – FL200. Cross DVOR/DME KST at 4000FT.
<b>TITUR 3G</b> After crossing TITUR (R266.9° D87.6NM KST), proceed on track 085° to DVOR/DME KST. Cross TITUR at FL120 – FL200. Cross DVOR/DME KST at 4000FT.
<b>LANOR 3G</b> After crossing LANOR (R317.7° D63.0NM KST), proceed on track 137° to DVOR/DME KST. Cross LANOR at FL120 – FL200. Cross DVOR/DME KST at 4000FT.
<b>UNIBE 2G</b> After crossing UNIBE (R129.3° D60.5NM KST), proceed on track 310° to DVOR/DME KST. Cross UNIBE at FL120 – FL200. Cross DVOR/DME KST at 4000FT.